



[Ver.2024.01.03.]

무대 기술 정보 안내

STAGE TECHNICAL SPECIFICATIONS

대학로예술극장

DAEHAKRO Arts Theater

소극장

Small Hall

1. General Information



- **Black Box Stage**

- Width 11.3m (The distance between house leg tower)
- Depth 18.15m (The distance from the end of the storage auditorium seat to the back wall of the back stage)
- Depth 14.75m (The distance from the end of the installed auditorium seat to the back wall of the back stage)
- Height 5.4m

- **Total Auditorium seats 132**

- Electricity storage auditorium seats (The location can't changed.)

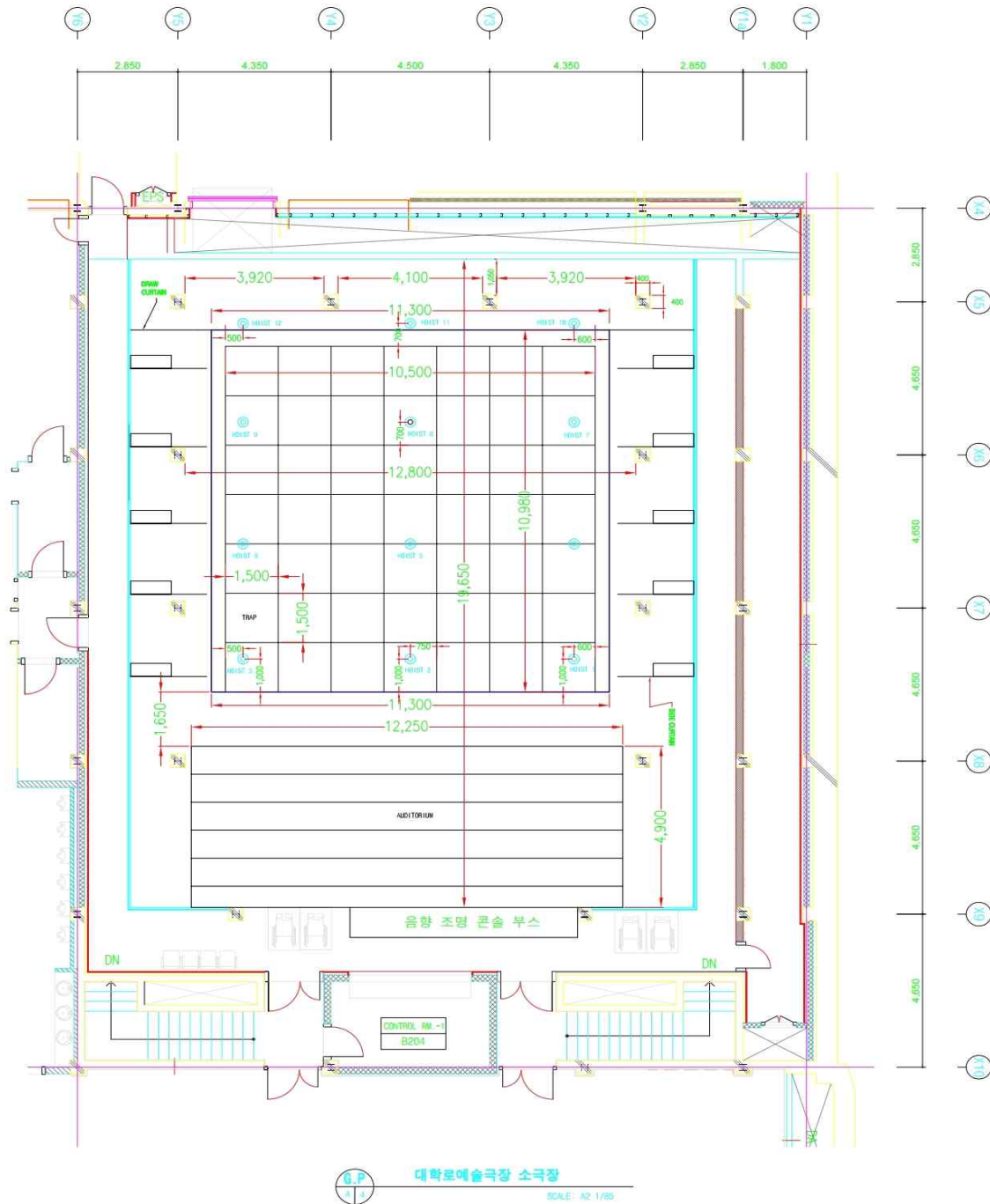
- **Stage Manager Desk**

- Available the wired and wireless intercom, walkie-talkie, paging system
- Mobile monitor (Infrared camera)

- **All equipment and goods in the theater can be moved after consultation in advance.**



1-2. General Information 2



노트(NOTES)

가로 11,300 (양쪽 다리막 끝선사이)
 세로 10,980 (트랩 앞 선에서 드로우 커튼까지)
 높이 5,400
 활용 무대면적 11,300*10,980 = 124.1㎡ = 37.5평
 객석크기 12,250*4,900
 반입구 크기 1,700*1,730
 무대 바닥에서 트랩 아래까지 깊이 -2,650
 호이스트 길이 6,000
 호이스트 하중 500kg

그리드 한 칸 크기 550*550
 갤러리 높이 3,000
 사이드 타워(다리막 겸용) 2,150*450*4,870

그리드에서 스피커 걸이까지 300
 그리드에서 스피커 하단 1,550
 스피커 길이 1,200
 무대에서 음향부스 높이 3,000
 스피커에서 객석까지 거리 5,400
 무대 중심선에서 스피커까지 거리 4,100
 프로젝트 선반에서 뒤 벽까지 거리 19,650



2. Working Policy

• Work schedule

	A.M	Break time	P.M	Break time	Night	Deadline
Start	09:00	12:00	13:00	17:00	18:00	22:00
End	12:00	13:00	17:00	18:00	22:00	

※ In the case of dinner time, if there is a Night rental, consultation are available between 17:00~18:00 or 18:00~19:00

• Safety helmet

Sortation		Place	
		Auditorium	Stage
Set up		When you work on ceiling, 2 nd Floor, balcony : Must-wear	Must-wear
		When there's no console booth or top work : Don't wear	
Rehearsal	Upper part and fixing focusing	Don't wear	Must-wear
	Technical and Dress rehearsal	Don't wear	Don't wear
Show		Don't wear	Don't wear
Withdrawal		When you work on ceiling, 2 nd Floor, balcony : Must-wear	Must-wear
		When there's no console booth or top work : Don't wear	

• Type A ladder

- Common information

- A. Must sure to wear a safety helmet when working on ladders
- B. It can only be installed on a flat, sturdy, non-slip floor
- C. Must have to work in pairs

- The height that you can be able to work on (Based on the foothold with feet)

Height	Forbidden work
Less than that 1.2m~2m	Can't work on the top footstep
More than 2m less than 3.5m	Wearing harnesses, Can't work on the top and second top footstep
Excess 3.5m	Do not use

• Flame retardant finish

- After flame retardant finish, submit your test report (Within 2 years)
- Safety check at the site

• Special effects

- Decide after prior consultation with the theater

3. Loading Dock



The outer door (Parking lot)



The inner door (B3 floor)

- The outer door size

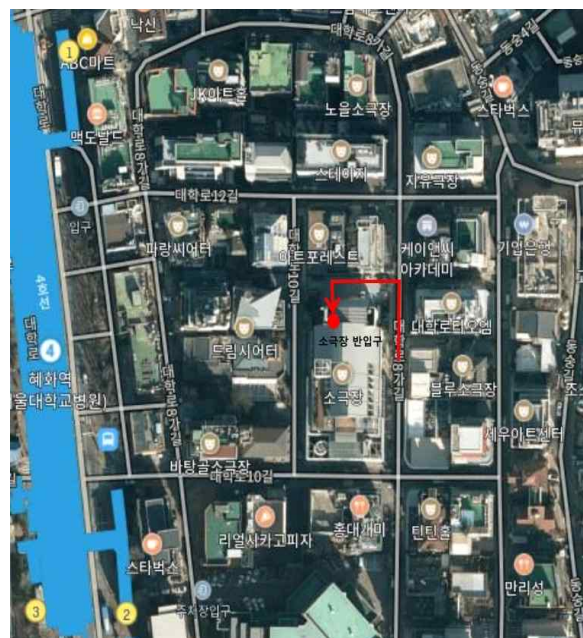
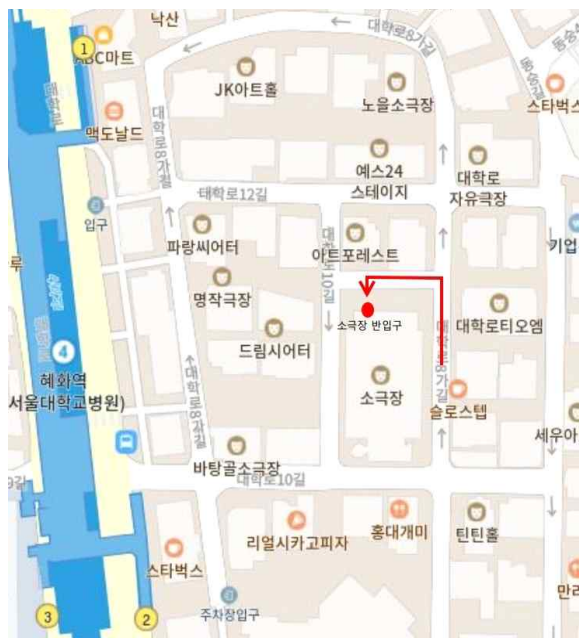
- Width 1,900mm
- Height 1,800mm
- Depth 4,000mm

- The inner door size

- Width 1,730mm
- Height 1,700mm

- The height of loading dock is 780mm based on the road
- If you do not enter the cargo elevator, you must bring it through the main entrance and lobby of the theater.

- Location – DAEHAKRO Arts Theater parking lot



4. Over Stage



- It consists of a grid structure and has an empty section in the middle.
The distance between the grid 600mm x 600mm
- Size
 - 48Ø (Diameter 48mm)
- Row 4, group3. A total of 12 Point Hoist
 - It can be used after installing the controller.
(Please refer to the drawing for the installable location)
 - Load : 500kg
 - Speed : 8m/min (UP/DN)
 - A, B group driving is possible

5. Floor Machinery

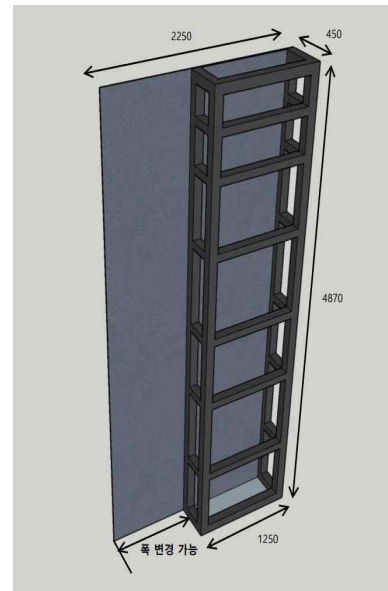
• Stage Trap



- Size 1,500mm × 1,500mm / 49 in total (7×7)
- Thickness 48mm

※ There is no lift at the under stage trap. f necessary lift, you should prepare separately.

• House Leg Tower



- Size 2,250mm(W) × 450mm(D) × 4,870mm(H)

- It is in the form an iron frame covered with leg curtain.
- It is possible to change the position in the stage, but the width can't be widened,
- It take manpower and time to move and change the location.



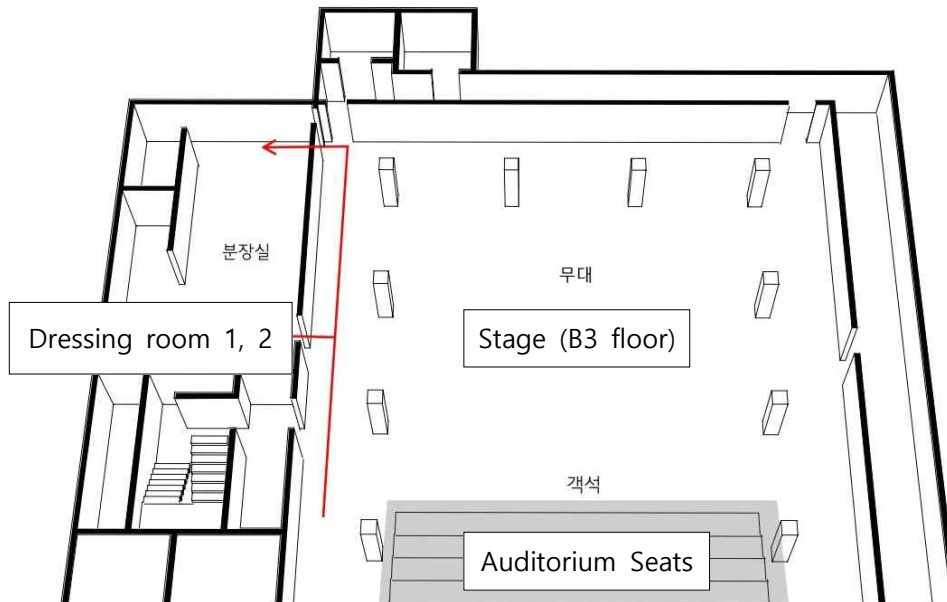
6. Platform

※ Only the quantity held in the theater should be used, but it can be moved **within DAEHACKRO Arts theater Main Hall and Small Hall** in consultation with the stage manager in charge.

Standard (size : cm)	Quantity
1×2 (30×60)	0
1×3 (30×90)	0
1×4 (30×120)	1
1×6 (30×180)	5
2×2 (60×60)	2
2×3 (60×90)	1
2×4 (60×120)	1
2×6 (60×180)	1
3×3 (90×90)	3
3×4 (90×120)	1
3×6 (90×180)	7
3×9 (90×270)	3
4×6 (120×180)	0
4×9 (120×270)	1
6×6 (180×180)	0
6×9 (180×270)	0
Apple box (30×45)	20
Stairway (90×90)	0
T = 15cm	

7. Dressing Room

• Location



※ It is located on the stage right.

※ The dressing room can be separated and used using the middle curtain.

• Facility

Dressing room	location	Number of people used	Shower	Toilet	Note
1	B3 floor	7 people	○	○	Located stage right
2	B3 floor	7 people	○	○	Located stage right

Reference Picture



The basic status Dressing room



Using the middle curtain status